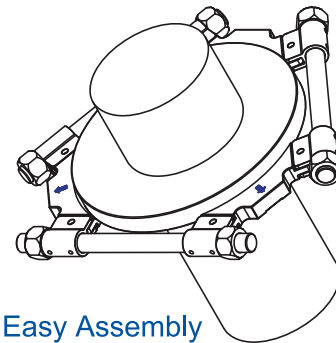
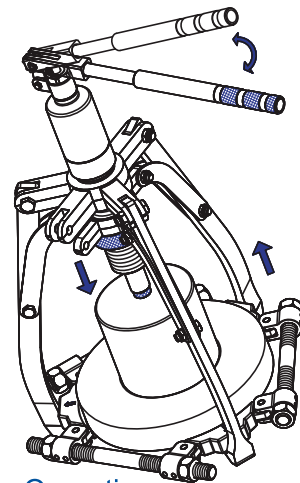




Swivel ear design to get wide open spread



Easy Assembly



Easy Operating

### SIMPLE, EASY

The tri-section plates are specially designed for having combined use with the three-armed pullers. The unique and patented swing design creates the max. spread and provides the most even force on most efficient point. The plates grip behind the inner & outer rings of the bearing together which prevents the pulling force from being transmitted through the rolling parts, minimizing the risk of bearing damaged.

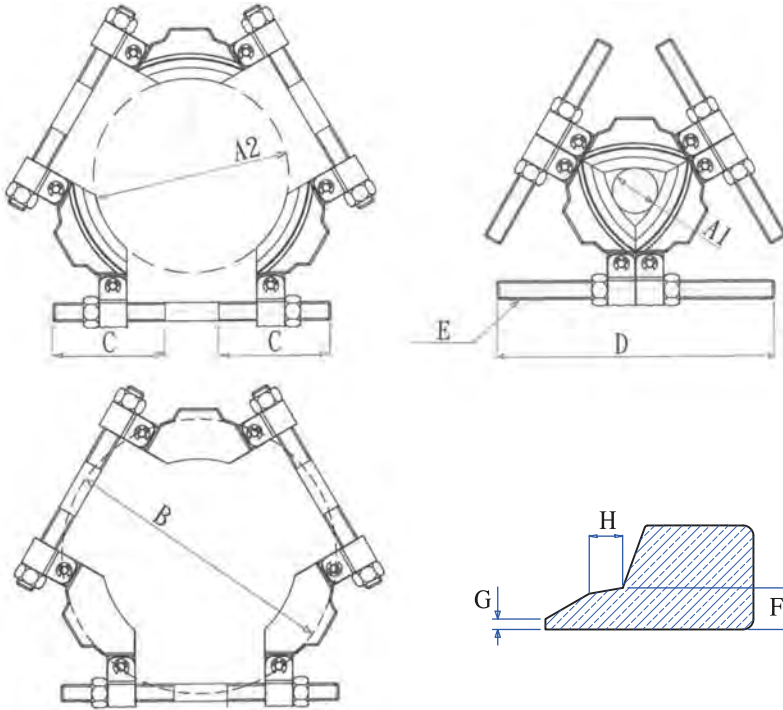


Spreading - Rear Side



Spreading - Front Side

The ET3 series consists of 3 different sizes of tri-section plates which are suitable for shafts with max. diameter ranged from 50 to 495 mm ( 2 to 19.5 in ).



No More Extra Accessories!

### USER-FRIENDLY:

- Unique & Patented Swing design creates the maximizing spread.
- The tri-section construction provide the even force distribution, preventing bearing from locking and/or tilting on the shaft during dismounting.
- Suitable for using in combination with all three-armed pullers.
- Available in a wide range, covering the most common shaft sizes.

### SAFE:

- The unique design of ET3 series provide the application of force on most efficient point, the inner ring & outer ring together, and thereby requiring less force for dismounting than upon pulling on the outer ring.
- The firm grip behind bearing's inner & outer rings ensures that the pulling force are not transmitted through the rolling parts, preventing bearing from damaging.
- The most parts are made by forging with SCM440 alloy steel which is achieving with the most safety and durable product.

### COST SAVING:

- The patented and swing design creates the bigger spread than all other splitters and causes much cost saving.
- The unique design create the most efficient, convenient and common shaft sizes covered on the pulling job.
- Eliminating the needs of extra accessory set and saving much cost from now on.

### SPECIFICATIONS ( mm )

Model No.	Available Shaft Dia.		Spread B(Max.)	C	D	E	F	G	H	Capacity ( Ton )	Weight (kg)
	A1	A2									
ET3-160	26	160	216	105	240	5/8"-11UNC	8	2	6.5	6	3.5
ET3-210	50	210	280	117	285	7/8"-14UNF	10	2	9	8	5.5
ET3-340	90	340	460	175	430	1 1/4"-12UNF	14	2	8	20	18
ET3-495	140	495	660	235	610	1 3/4"-12UNF	20	2	12	30	45